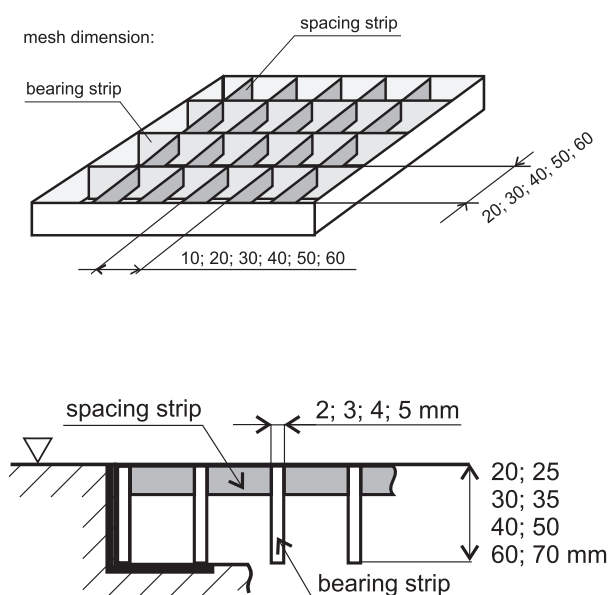
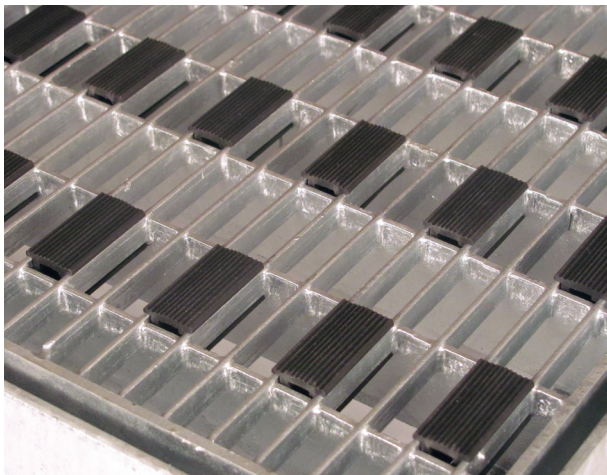


# TECHNICAL DATA SHEET – SCRAPER



A self-supporting mat made up of supporting and distance strips, pressed into one another under a certain pressure. In this way, a solid connection and an even distribution of load acting on the grate is achieved. It is used for removing rough dirt - mainly mud, stones and snow. It can also be used to cover English courtyards and as a draining grate, where the grate is embedded under the floor level onto a prepared drain gutter. The mat is also assembled with a polymer-concrete drained **CLEANBOX**.



## Technical parameters of standard grates

<b>Design:</b>	hot zinc
<b>Loop dimensions:</b>	30x10 mm
<b>Supporting strip dimensions:</b>	30x2 mm
<b>Grate dimensions:</b>	module 60x40 cm with embedded frame 35 × 35 × 4mm, module 60x40 cm without frame any dimension, the length of the supporting strip must not exceed 120 cm
<b>Installation:</b>	at floor level, in the openings with embedded frame, or freely placed on the floor

