

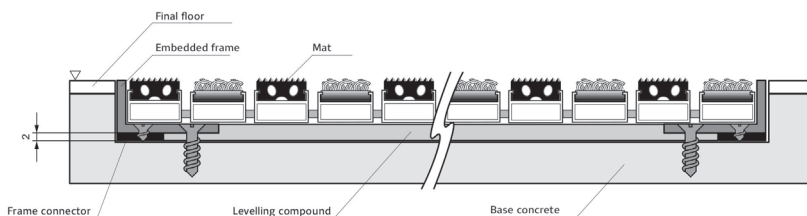
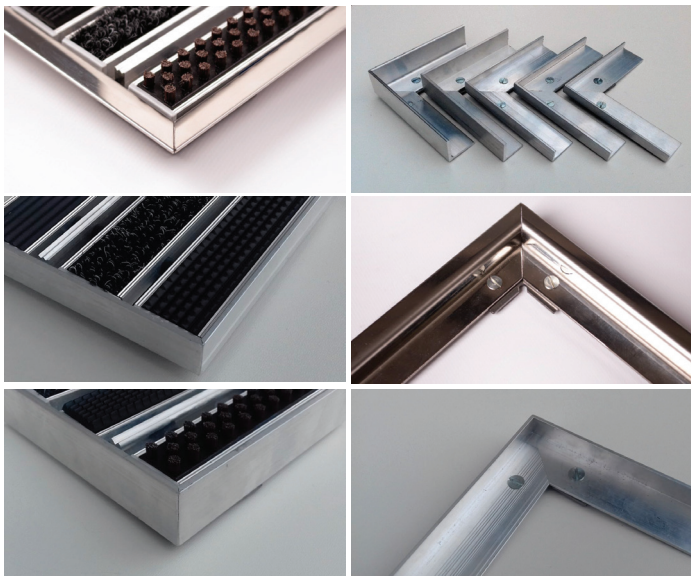
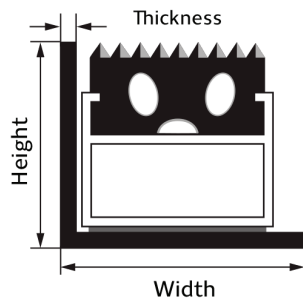
TECHNICAL DATASHEET - FRAMES FOR FLOOR EMBEDDING

The ideal option for the installation of a mat is to embed it at floor level. This makes it a barrier-free cleaning zone with solid support. If the floor is already prepared and the mat is to be laid on it, we recommend that it be equipped with a tapered frame or a tapered strip at the front for comfortable walking. The height of the frame is determined by the selected mat type and height.

Materials:

aluminium - natural polished surface, L profile

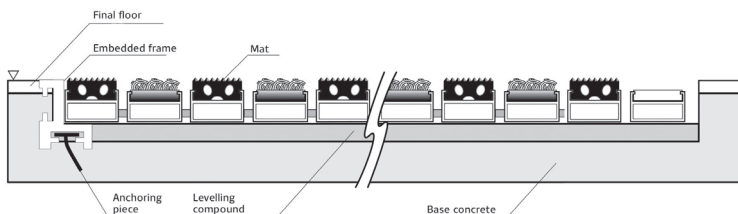
stainless steel - matt stainless steel in its natural state, L profile



Reinforced frame for larger loads

Extra thick frame for floor embedding

Solid aluminium profile that can be used with an anchoring element and embedded in the substrate with concrete.



Design STAINLESS STEEL MAT

Height	Width	Thickness
30 mm	30 mm	3 mm
25 mm	25 mm	3 mm
20 mm	20 mm	3 mm

Design STAINLESS STEEL GLOSS profile Z

Height	Width	Thickness
Profile of Z		
30 mm	14 mm (top), 20 mm (spodni)	2 mm
25 mm	14 mm (top), 20 mm (bottom)	2 mm
20 mm	14 mm (top), 20 mm (bottom)	2 mm
15 mm	14 mm (top), 20 mm (bottom)	2 mm

Design ALUMINIUM

Height	Width	Thickness
30 mm	30 mm	3 mm
25 mm	25 mm	3 mm
20 mm	30 mm	3 mm
15 mm	30 mm	2 mm
13 mm	30 mm	3 mm
10 mm	30 mm	2 mm

Design STAINLESS STEEL GLOSS profile L

Height	Width	Thickness
Profile of L		
30 mm	30 mm	2 mm
25 mm	30 mm	2 mm
20 mm	30 mm	2 mm
15 mm	30 mm	2 mm